

SECTION 32, T.7N., R.1W., S.L.B. & M.  
IN NORTH OGDEN CITY & NORTH OGDEN DISTRICT

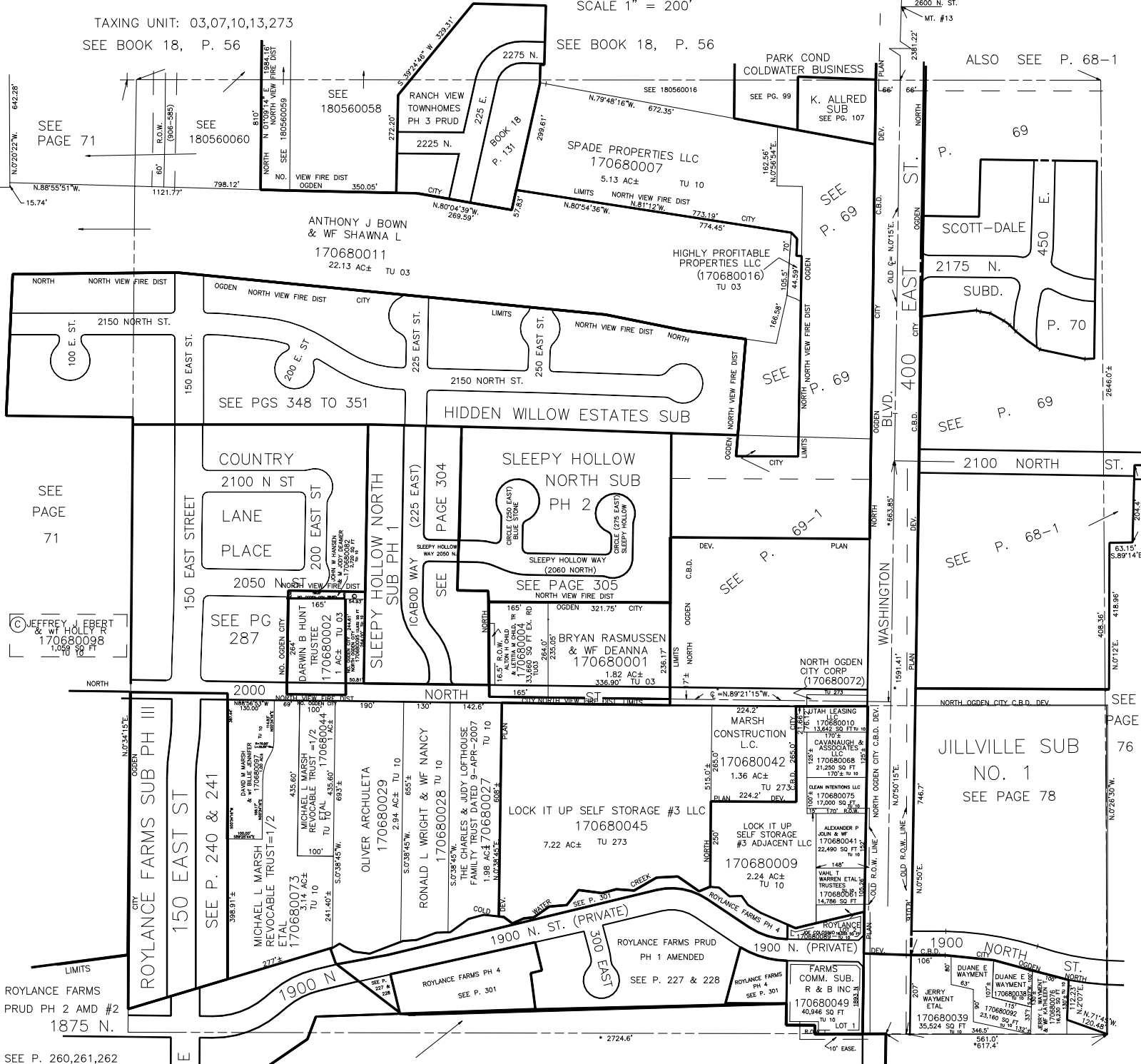
SE 1/4

SCALE 1" = 200'

TAXING UNIT: 03,07,10,13,273  
SEE BOOK 18, P. 56

SEE BOOK 18, P. 56

ALSO SEE P. 68-1



©JEFFREY J. EBERT & W.F. HOLLY  
170680098  
1:500

SEE 110140004

SEE BOOK 11, PAGE 14

SEE 110140012

\* NOTE: DATA COMPILING FROM THE PRIVATE ENGINEERING CO.